

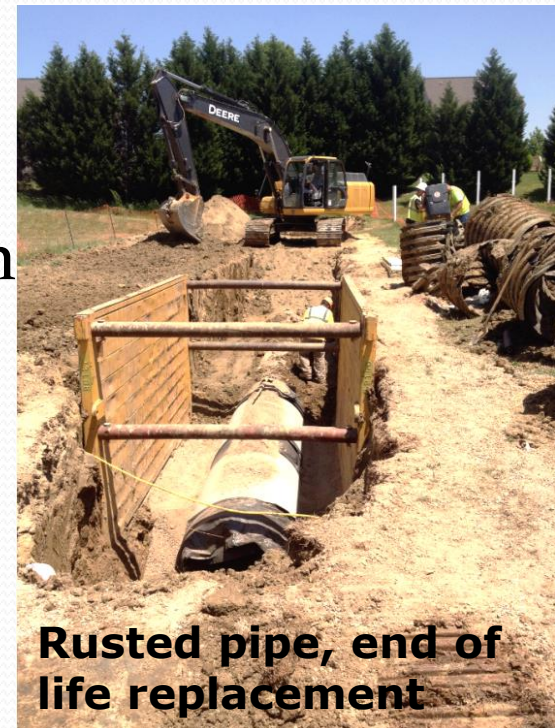
How funding is allocated

- City/County Program consists of expenditures for:
 - Flood control/stream stability
 - Storm drain maintenance / replacement
 - Federal Clean Water Act (NPDES)
 - National Flood Insurance Program(NFIP)
- The cumulative expenditures on these programs results in the fee that is charged
- Fee credits are based on the degree that these program needs are reduced by fee payer actions

Why is a change needed?

Some *universal* program expenses are not closely associated with actions of the fee payer:

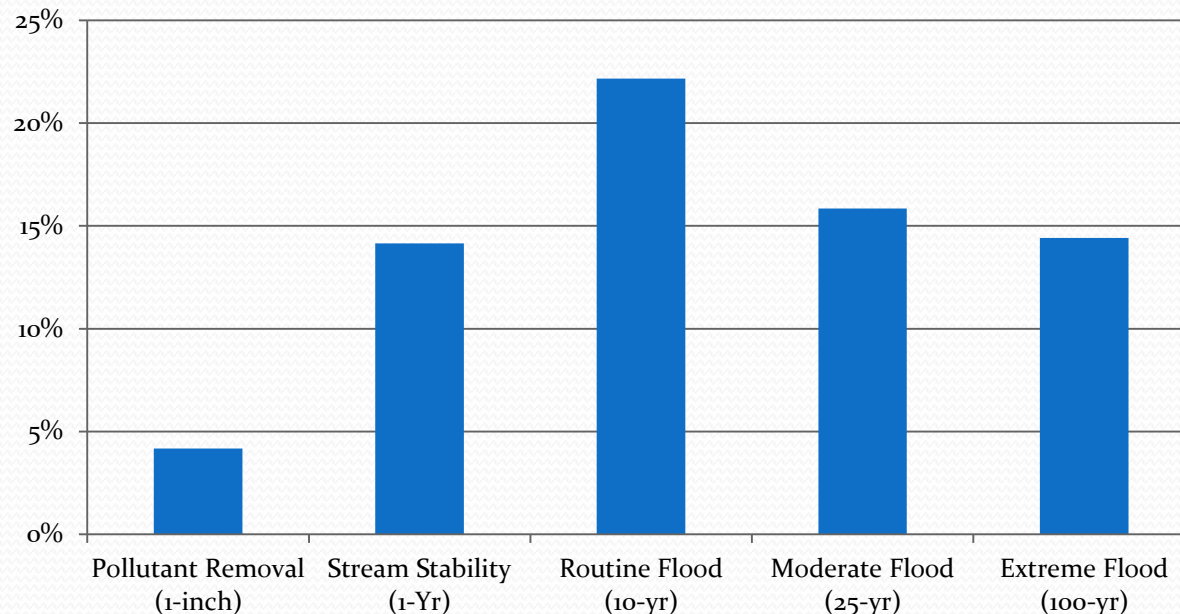
1. Maintenance / replacement
2. National Flood Insurance Program
3. Federal Clean Water Act regulations - public education, pollution prevention programs



The Sum in Each Category Represents the New Maximum Credit Value

- Portion that IS influenced by stormwater control devices – 72%
- Portion that IS NOT influenced by stormwater control devices – 28% (Maintenance, National Flood Insurance Program, and Federal Clean Water)

How the 72% stacks up: The graph shows how the utility spends the fee revenue, allocated to 5 expense categories. This is how a device is credited.



Conversion for Credited Sites

- Current accounts contain 2 categories, new contains 5
- Most ordinance-required basins provide a control level that addresses stream bank erosion and routine floods
- Basins also provide a reduced benefit for the other storms

Control Level	Total Credit Available	Conversion Factor	Percent of Total Credit (dry basins)
Stream bank erosion	15%	100%	15%
Routine flood (10yr)	21%	100%	21%
Moderate flood (25yr)	17%	40%	7%
Extreme flood (100yr)	15%	10%	1.5%
Remove pollutants (1")	4%	35%	1.4%
	72%		46%

Credits to be converted using this approach; may resubmit

Example Conversion: Dry Detention Basin

Under Current Credit Policy

Peak	100% of 40% available
Volume	<u>0% of 60% available</u>
Total %	40 %

Under Proposed Credit Policy

1 yr	0 %
10-yr peak	21 %
25-yr peak	7 %
100-yr peak	1.5 %
1" control	<u>1.4 %</u>
Total %	30.9%

Available Percentage of Total Credit (dry basins)

15%

21%

7%

1.5%

1.4%

46%

Trends for Non-Single Family Accounts

- Most credits drop significantly
 - Current average fee credit is 59.6%
 - Once converted the average is 34.6%
-
- Post Construction Stormwater Ordinance compliant sites typically eligible for a 63.5% credit (72% max)

*** Data as of early 2016*